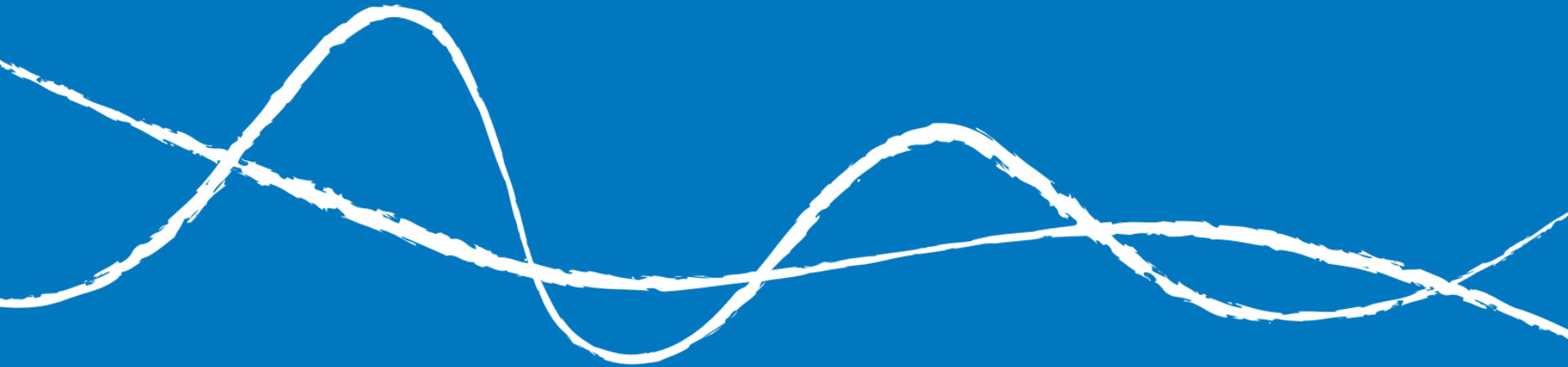


Welcome to our 2025 AGM

5pm 23rd October



OVESCO Limited CBS



**OVESCO Sunny Solar Schools
(Eastry Energy CBS)**



Welcome & Introductions



This 2025 AGM is For the members of:

OVESCO Limited

Current Non-Ex Directors:

1. Nick Rouse
2. Jan Hunter
3. Paul Bellack
4. Nick Owens

OVESCO Sunny Solar Schools (Eastry Energy CBS)

Current Non-Ex Directors:

1. Chris Rowland
2. Julie Salmon
3. Patrick Crawford
4. Nick Rouse
5. Nick Owens

Services Agreement

Day to day operations

Ouse Valley Energy Services CIC

Ex Directors:

1. Chris Rowland
2. Patrick Crawford
3. Nicki Myers

Non-Ex Directors:

7. Nick Rouse
8. Jan Hunter
9. Paul Bellack
10. Tanya Warburton
11. Adrian Ross
12. Jamie Matthews

Staff:

13. Claire Walker
 14. Ruth Rudwick
 15. Mica Janiv
 16. Frank Donghi
 17. Jimi
- + Energy Our Champions

1. **OVESCO update** – Chris Rowland
2. **Accounts** – Chris Rowland & Nick Owens
3. **Resolutions & Voting** – Chris Rowland (+ Nicki counting votes)
 - OVESCO Limited
 - Eastry Energy (Ovesco Sunny Solar Schools)
4. **Project performance** – Nick Rouse
5. **Power Down** – Nicki Myers
6. **Projects in Development** – Chris Rowland
7. **Questions and discussion** - Chris Rowland

5pm start & we aim to finish by 7pm

Chris Rowland

OVESCO 2025

Current Position

- **Ouse Valley Climate Action** - In our last year funding, so we are in the process of securing & applying for future funding for energy advice work
- **Energy Advice** – Across the Lewes District & beyond with our energy champions
- **Projects in Development** – Ouse Valley Solar Farm is our largest project at 17MW & we have a pipeline of other projects
- **Stakeholders & partners** – SDNP, Community Energy Pathways, UKPN, Local Authorities (Devolution!), Sussex Energy & GB Energy + Ofgem
- **Meadow Blue Community Energy** - OVESCO continues to manage the 5MW Merston solar farm & shareholder interests with Communities for Renewables. MBCE is generating an annual community benefit fund.

Chris Rowland & Nick Owens

OVESCO Limited IPS – 2024 Accounts Highlights

Filed Accounts for Year Ending 31st December 2024

- Fixed Assets **£158,656** (2023: **187,470**) - PV at Harveys, Priory School, Barcombe Nursery, Brickyard Farm, Wallands School & Ringmer School
- Net assets **£233,892** (2023: £275,765)
- Share capital **£287,852** (2023: £310,385)
- Number of shareholders 2024 = 189 (2023: 193)
- Turnover **£75,651** (2023: £67,244)
- Operating (loss)/profit before interest (**£7,520**) (2023: 13,402)
- Accounts Loss for year **£19,340** (2023: **£2,552**) after tax

Filed Accounts for Year Ending 31st December 2024

- 9

Feed-in Tariff (FiTs)s increase in line with inflation
& Power Purchase Agreements (PPAs) in line with contracts with our energy users.

- **OVESCO Limited CBS** will be repaying 10% of capital invested and Interest of 4% will be paid in December 2025 on capital held at 31st December 2024
- **OSSS Eastry Energy CBS** will be pay Interest of 4% will be paid in December 2025 on capital held at 31st December 2024

In early December you will receive a statement showing the opening and closing capital and the interest you will receive.

Approve Minutes from 2024

OVESCO Limited

Presented overview of accounts for OVESCO Limited year ending 31st December 2023

Voted:

- *To accept the OVESCO Limited IPS accounts for the year ended 31 December 2023*
- *In accordance with Section 84 of the Co-operative and Community Benefit Societies Act 2014, the Society shall be exempt from the obligation to appoint a qualified auditor for the Society's financial year ending 31st December 2024.*
- *To re-elect Nick Owens as a director*
- *To re-elect Paul Bellack as a director*

CONFIRM - All resolutions approved by OVESCO Limited members attending. No one voted against or abstained

Eastry Energy Limited

Presented overview of accounts for Eastry Energy Limited year ending 31st December 2023

Voted:

- *To accept the OVESCO Sunny Solar Schools (Eastry Energy CBS) accounts for the year ended 31 December 2023*
- *In accordance with Section 84 of the Co-operative and Community Benefit Societies Act 2014, the Society shall be exempt from the obligation to appoint a qualified auditor for the Society's financial year ending 31st December 2024.*
- *To re-elect Nick Owens as a director*
- *To re-elect Nick Rouse as a director*

CONFIRM - All resolutions approved by Eastry Energy Limited members attending. No one voted against or abstained.

OVESCO Limited IPS

1. To **accept** the OVESCO Limited IPS **accounts** for the year ended 31 December 2024
2. In accordance with Section 84 of the Co-operative and Community Benefit Societies Act 2014, the Society shall be **exempt from the obligation to appoint a qualified auditor** for the Society's financial year ending 31st December 2025.



Thank you to Jan Hunter who is stepping down

3. To re-elect Nick Rouse as a director



4. To re-elect Julie Salmon as a director



OVESCO Sunny Solar Schools (Eastry Energy CBS)

1. **To accept** the OVESCO Sunny Solar Schools (Eastry Energy CBS) **accounts** for the year ended 31 December 2024
2. In accordance with Section 84 of the Co-operative and Community Benefit Societies Act 2014, the Society shall be **exempt from the obligation to appoint a qualified auditor** for the Society's financial year ending 31st December 2025.
3. To re-elect Patrick Crawford as a director
4. To re-elect Julie Salmon as a director



Nick Rouse

Technical update



OVESCO Limited - Project Details



| | Harveys Depot | Priory School | Brickyard Farm | Barcombe Nursery | Wallands School | Kings Academy Ringmer |
|-----------------------|---------------|---------------|----------------|------------------|-----------------|-----------------------|
| When Installed | Aug. 2011 | Jul. 2012 | Aug. 2012 | Aug. 2012 | Jan. 2016 | Sep. 2016 |
| Rating | 98 kW | 35.2 kW | 19.5 kW | 9 kW | 29.39 kW | 29.64 kW |
| Predicted Output p.a. | 86,477 kWh | 37,509 kWh | 17,720 kWh | 8,374kWh | 31,145 kWh | 29,148 kWh |
| FIT rate Generate | 54.59 p/kWh. | 24.65 p/kWh | 24.05 p/kWh | 26.48 p/kWh | 15.84 p/kWh | 17.22 p/kWh |
| FIT rate "Export" | 0 p/kWh | 0 p/kWh | 5.07 p/kWh | 5.07 p/kWh | 7.14 p/kWh | 7.14 p/kWh |
| Sale to School etc. | 15.06 p/kWh | 0 p/kWh | 0 p/kWh | 0 p/kWh | 5.6 p/kWh | 5.9 p/kWh |
| Predicted Income p.a. | £48,510 | £9,246 | £4,711 | £2,430 | £6,052 | £7,642 |

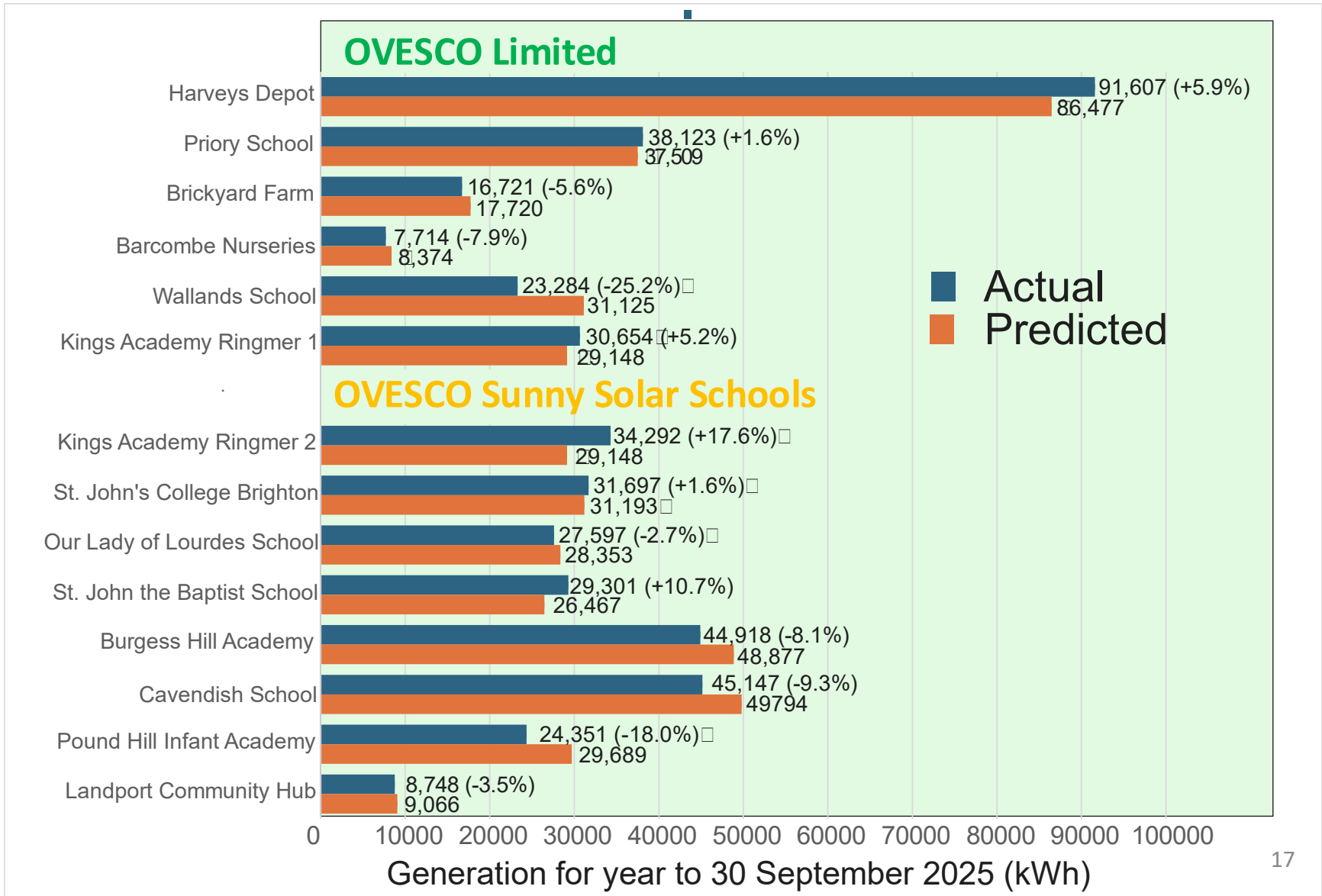
OVESCO Sunny Solar Schools - Project details

Eastry Energy CBS

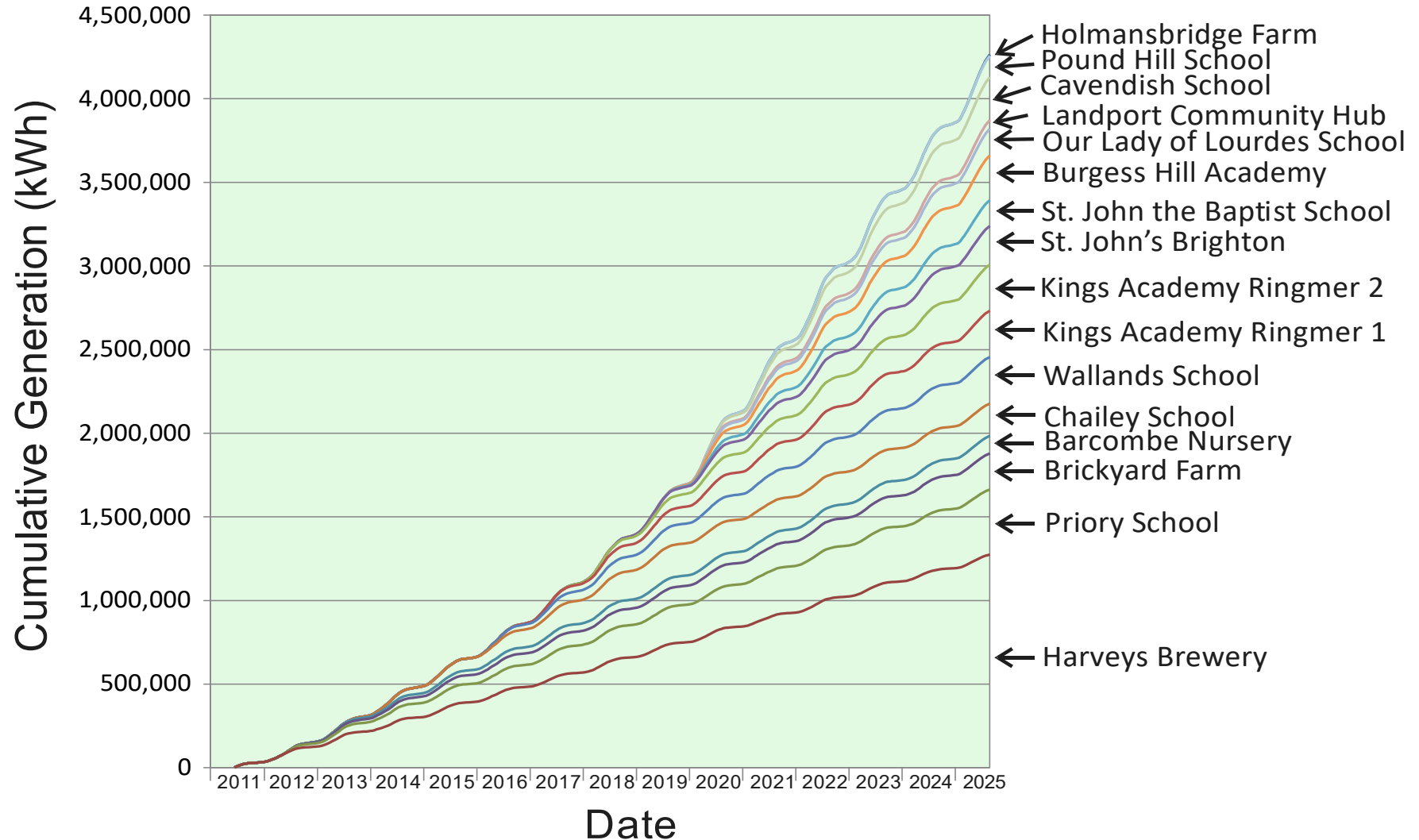


| | Ringmer Kings Academy 2 | St. John's College | Our Lady of Lourdes Sch. | St. John the Baptist Sch. | Burgess Hill Academy | Cavendish School | Pound Hill School | Landport Community |
|----------------------|-------------------------|--------------------|--------------------------|---------------------------|----------------------|------------------|-------------------|--------------------|
| When Installed | Sep. 2017 | Aug.2018 | Aug. 2019 | Aug. 2019 | Aug. 2019 | May. 2020 | Jul. 2020 | Feb. 2020 |
| Rating | 29.7 kW | 28.29 kW | 28.6 kW | 24.8 kW | 49.78 kW | 49.4 kW | 29.9 kW | 8.68 kW |
| Predicted Output p.a | 32,545 kWh | 31,193 kWh | 28,353 kWh | 26467 kWh | 48,877 kWh | 49,794 kWh | 29,689 kWh | 9,066 kWh |
| FIT rate Generate | 6.08 p/kWh | 5.69 p/kWh | 5.35 p/kWh | 5.35 p/kWh | 5.35 p/kWh | 4.90 p/kWh | 5.35 p/kWh | 4.90 p/kWh |
| FIT rate "Export" | 7.14 p/kWh | 7.14 p/kWh | 6.86 p/kWh | 6.86 p/kWh | 0 p/kWh | 0 p/kWh | 7.14 p/kWh | 7.14 p/kWh |
| Sale to School etc. | 8.8 p/kwh | 10.8 p/kWh | 10.8 p/kWh | 10.8 p/kWh | 8.7 p/kWh | 9.0 p/kWh | 8.7 p/kWh | 0 p/kWh |
| Predicted Income p.a | £4720 | £5790 | £3655 | £3749 | £6383 | £6651 | £4384 | £739 |

OVESCO Limited & OVESCO Sunny Solar School Generation Last 12 months



Cumulative project performance



Savings and Earnings by PPA arrangements

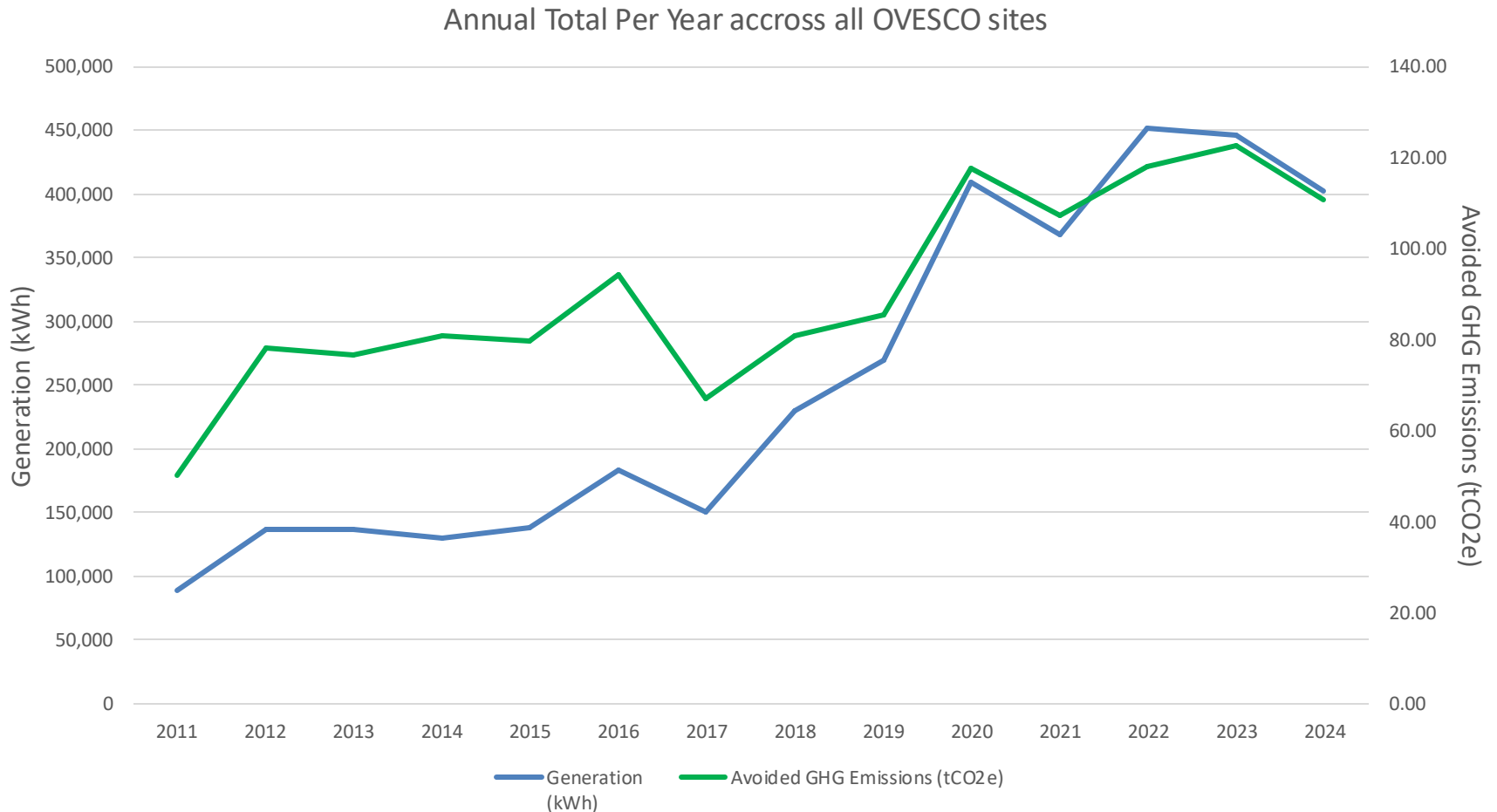
Total savings to our schools with PPA's over the last four years

| School | Savings by School | Earnings by Ovesco |
|----------------------------|--------------------|--------------------|
| Burgess Hill Academy | £26,378.71 | £13,765.66 |
| Cavendish School | £28,403.56 | £14,639.48 |
| Our Lady of Lourdes | £9,465.60 | £6,179.51 |
| Pound Hill Academy | £12,189.17 | £5,706.65 |
| St John The Baptist | £8,689.15 | £5,952.61 |
| St John's College Brighton | £17,392.57 | £12,972.37 |
| Kings Academy Ringmer 1 | £21,664.83 | £11,551.96 |
| Kings Academy Ringmer 2 | £18,767.14 | £9,560.66 |
| Wallands School | £15,526.62 | £4,955.81 |
| Total | £158,477.33 | £85,284.71 |

Update on O&M in 2025

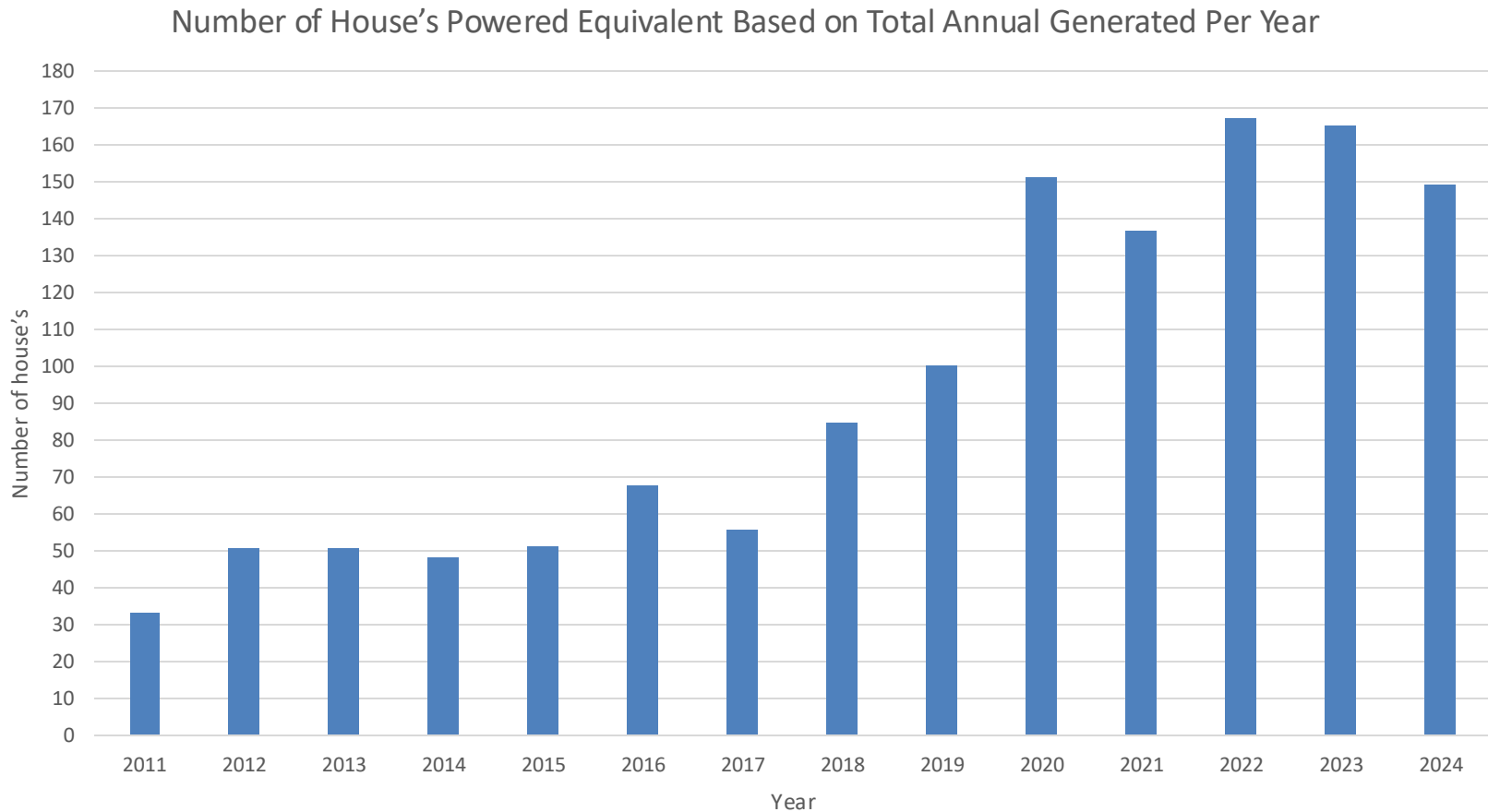
2025 no major challenges with existing PV systems & the systems are serviced every year

- **Wallands School** - system is now back to full performance following removal and refit to allow for repair work on the roof.
- **Harveys Depot** - had wires installed over the panels to successfully reduced the gull droppings problem.
- **Pound Hill** - had edge netting installed to keep out birds from nesting under the panels.
- **Priory School** replacement PV:
 - The Old system was not performing well & averaging 26,100kWh/yr
 - The new system generated 38,288 kWh in the last 12 Months
 - Reduced energy bills for the school (£7K last 12 months saved)
 - Carbon footprint reduced by 13 tonnes this year



2011-2024 annual total generation kWh is 3,544,7886

2011-2024 annual total carbon saved in tones (tCO2e) is 1270.47



A typical 2–3-bedroom house with 2-3 people resident has average annual electricity use of 2,700 kWh - [Ofgem](#)

Nicki Myers

OVCA & Powering Down





1,845 households reached

Through energy advice, home visits, drop-ins, events and community outreach



27 community events supported

Engaging residents across the Ouse Valley area providing Energy Advice where it's needed most



800+ people engaged through flagship events

Including our first Eco Home Extravaganza & Eco Open Homes



Energy support delivered across 20+ towns and villages

From Lewes to rural villages, Peacehaven, Newhaven & Seaford



Event pictures



Eco Extravaganza in May at Lewes Town Hall



Eco Home Open Houses



Climate Action event in Peacehaven

STEM education event in Lewes

Eco Home - Events & Services in 2025+

FREE DROP-INS

Our Drop-in **service at Lewes House** is open:

Thursdays 11am - 3pm
&
Fridays 11am - 3pm



ECO HOME
ENERGY ADVICE



ECO HOME
EXTRAVAGANZA

SATURDAY 8 NOVEMBER
11AM-3PM
LEWES TOWN HALL



ECO HOME
THERMAL IMAGING



ECO HOME
OPEN HOUSES
& GARDENS

SEPTEMBER 2025

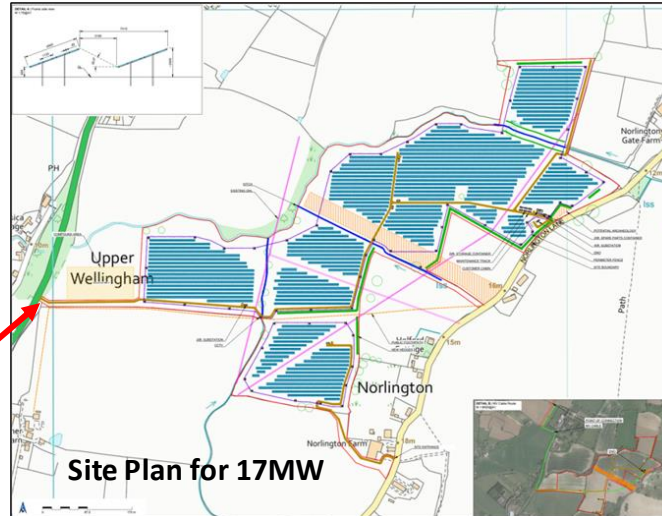
| | |
|----------------------|----------------------|
| BARCOMBE | SAT 13 th |
| LEWES | SAT 20 th |
| HASSOCKS & DITCHLING | SAT 27 th |
| RODMELL | SAT 27 th |

Chris Rowland

OVESCO Projects



Projects in Development - OVSF



- **Ouse Valley Community Energy CBS** set up in preparation for a share/bond offer
- Planning pre-construction conditions completed (see photos above)
- Lease signed
- Grid connection confirmed with new point of connection nearer site
- Team in place to select contractors, funders and lawyers
- We are now looking to connect **June 2027**



Photo – OVESCO Technical Team Frank & Jimi on site at Holmansbridge Farm

Preparing for **Ouse Valley Community Energy CBS** share offer early 2026

Current sites:

1. **Holmansbridge Farm** – 14.5kW constructed & operating successfully
2. **Raystede** – 90kW aiming to construct early spring 2026
3. **Barcombe Community Energy** – planning submission for up to 250kW

Other Projects & Feasibility work:

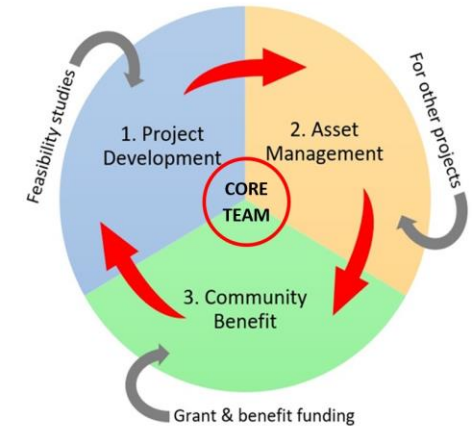


1. **Crowborough Town Council (PTC)** – Solar PV & heat pump installation.
2. **Lewes & School Hill House's** - Advising on LDC's building decarbonisation.
3. **Peacehaven Town Council** - Decarbonisation plan & projects.
4. **Raystede Animal Welfare Charity** - Decarbonisation plan & AD feasibility.
5. **Newhaven Port** – About to start an energy generation & storage feasibility study, working with Brighton Energy Coop.
6. **Harveys Brewery** – Advising on delivering additional PV to the brewery.
7. **Priory School** - Investigating additional PV at the school.

Note: Items 3, 4 & 5 funded by the Community Energy Fund

Summing up

- **OVESCO** core team has scaled up our services
- We have had another **successful year**
- We are on track to pay **4% interest** to all current investors at Christmas
- OVESCO in good stead for the next year and we continue to seek funding to bring in income for **long term sustainability**
- If you **donate** your interest payment to OVESCO we will use it for Community Benefit work



We welcome your involvement & support

- Help us **promote** the **Energy Room & Climate Hub** at Lewes House the work OVESCO is doing locally
- Support our planning application for **Barcombe Community Energy**
- Invest in future projects when we launch our **next share offer Spring 2026**
- Ask your **Councillors** and **MP's** to support OVESCO to continue to give energy advice and generate local renewable energy
- Let us know of any **skills you have** that we could make use of or anyone you know of who can support us. Skills we need: Financial and Legal
- Support us to involve a **younger generation** of directors & staff for the future

Contact us at hello@ovesco.co.uk to find out more

Any Questions?

Thank you

www.ovesco.co.uk hello@ovesco.co.uk Tel: 01273 472450



OVESCO Limited



OVESCO Sunny Solar Schools
(Eastry Energy CBS)



END